



NOT SAN FRANCISCO VALUES

OLATHE CITY COUNCIL VOTER GUIDE


**Family
Policy**ALLIANCE™
of Kansas

**VOTE YOUR VALUES
ON NOVEMBER 5TH**

Name	District	Opposes Men in Women's & Girls' Intimate Spaces?
 John Bacon	At Large	YES¹
 Alan Marston	At Large	NO²
 Adam Mickelson	Ward 2	YES
 Jim Randall	Ward 2	NO³

Paid for by Family Policy Alliance of Kansas
4021 SW 10th Street, Suite 311
Topeka, KS 66604

TAKE A STAND FOR OLATHE VALUES

Some Olathe politicians think men should be able to use bathrooms, locker rooms, and even showers designated for women and girls.

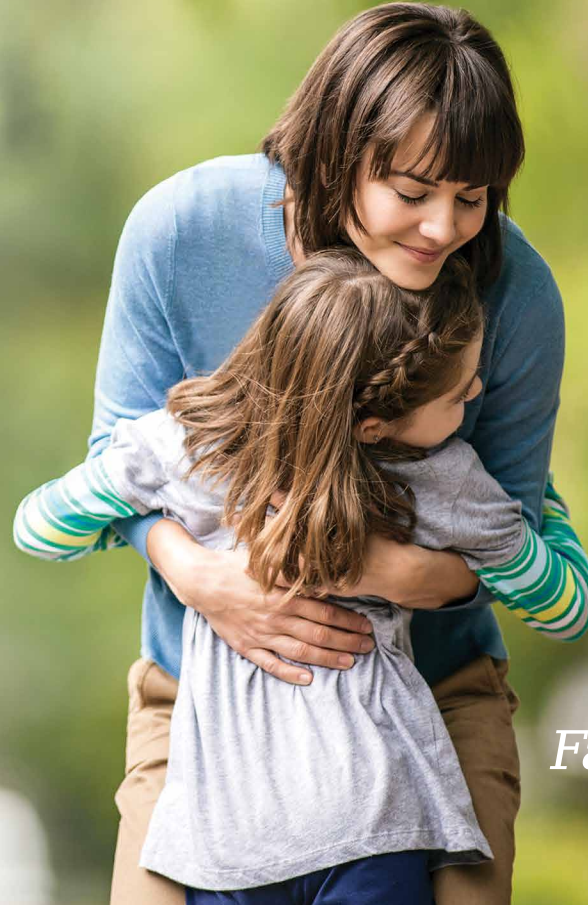
In 2019, the Olathe City Council took the first step toward passing special protections on the basis of gender identity.

These kinds of ordinances allow males to use intimate facilities of females without explanation, putting women of all ages at risk.

We need leaders who will stand up for our values and keep us safe.

VOTE YOUR VALUES ON NOVEMBER 5TH

VOTE EARLY BY MAIL OR
IN-PERSON STARTING
OCTOBER 28TH




**Family
Policy**ALLIANCE[™]
of Kansas

1) Voted against Resolution No. 19-1024. Olathe City Council Minutes 3/5/19, page 5;
2) <https://www.marston4olathe.com/post/equality-for-all-olathe-s-non-discrimination-ordinance>;
3) Voted for Resolution No. 19-1024. Olathe City Council Minutes 3/5/19, page 5